



Prime Healthcare Foundation

February 16, 2026

Dear Central Maine Colleagues,

As we prepare for our journey forward together, we want to welcome you and your families to Prime Healthcare Foundation and share important information about your upcoming benefits enrollment.

We are honored to offer you and your families a comprehensive suite of benefits that provide quality and value. Your new Prime Healthcare benefits will become effective **April 1, 2026** and until then your current benefits will continue. To ensure uninterrupted coverage, **Open Enrollment will take place from February 18 through March 6, 2026.**

Prime benefits offer comparable and greater value than current benefits, including medical benefits with lower contributions, copays and deductibles.

To learn more about the benefits that Prime Healthcare offers, please visit <https://centralmaine.prime-healthplan.com/> (Password: centralMaine)

On this site you will be able to access valuable information such as:

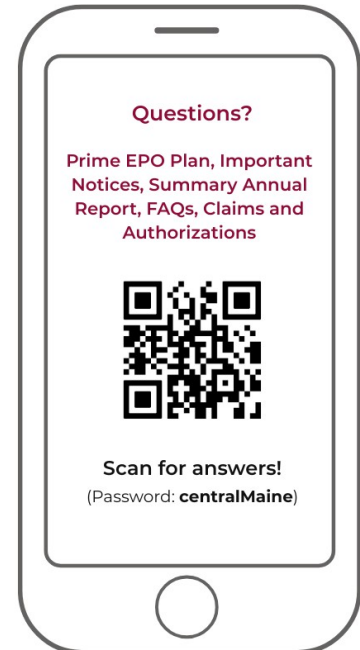
- Employee Health Plan FAQs
- Continuation of Care Form
- Dependent Verification Chart
- Benefit Guides

Additional information, including **Provider Directory details**, will be shared soon.

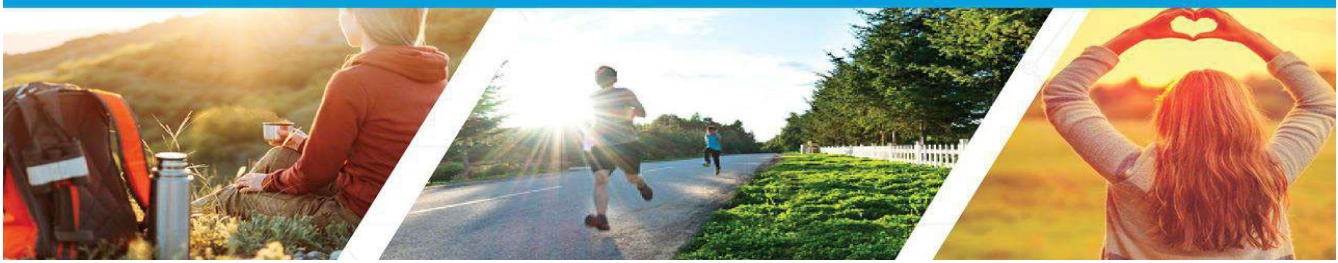
Please review the enclosed **Open Enrollment FAQs**, which provide important guidance on your benefits options and the enrollment process. We encourage you to take time to review this information carefully and ask questions as needed.

We look forward to caring for you and your loved ones as our newest members of the Prime Healthcare family. If you have any questions during this HealthPlan benefits enrollment process, please contact us at EHPBenefits@primehealthcare.com

Sincerely,
The Prime Healthcare Corporate Benefits Team



3480 E. Guasti Road, Ontario, CA 91761 | 909-235-4400
primehealthcare.com



Open Enrollment FAQs

Open Enrollment is an opportunity to review the benefit options available to you and your eligible dependents and select the coverage that best meets your needs. Prime Healthcare offers a self-funded, medical EPO Health Plan for our valued employees that is among the best in the nation. Providing healthcare services through our own award-winning hospitals as part of the Tier 1 Prime Healthcare Network is an honor and a privilege. It allows us to deliver high-quality care while passing savings directly to employees and their families through little to no cost and minimal or no payroll contributions.

Prime continues to enhance the EPO plan by expanding access to telehealth services, mental health resources, and other support programs that reflect our commitment to caring for you as you care for others.

The EPO plan provides employees and their dependents access to a broad network of Prime hospitals and physicians across the United States, along with access to our affiliated network, BCBS BlueCard. The EPO Plan covers 100 percent of preventive care and most inpatient and outpatient hospital-based services within the Tier 1 Prime Healthcare Network at little or no cost – providing quality, compassionate and award-winning care. We want all associates to be healthy and cared for in the same way that you care for the patients, families, and communities you serve.

We are excited to share the benefits of our EPO Plan, including:

- No annual deductibles for Tier 1 services.
- Covered at 100% for most care.
- No authorizations required for primary care visits, PCP visits, Ob/GYN, well-woman and Pediatric office visits.
- High-quality plan and an award-winning network of hospitals and providers at the lowest costs to its members, providing value that is greater than a PPO plan.
- The Tier 1 Prime Healthcare Network 1 includes Prime's own award-winning hospitals and physicians and is growing daily to provide even more services and providers. Any provider can be referred to join the Tier 1 Prime Healthcare Network at no cost to the physician.
- The 1.5 benefit program ensures that any care a EPO plan member needs will be provided. If unavailable within the Prime network, it will be provided through our affiliated BCBS BlueCard Network at little or no cost to members (Tier 1 rates).



3480 E. Guasti Road, Ontario, CA 91761 | 909-235-4400
primehealthcare.com

1. How do I enroll?

Benefit plans and elections will NOT roll over once Central Maine Healthcare associates become a member of Prime Healthcare. Therefore, you must enroll in a new benefit plan with a Benefit Counselor. The selections you make during enrollment are very important. Invest the time to learn more about our benefits portfolio with a licensed Benefit Counselor who will provide a one-to-one session to help navigate you through your benefit options.

Benefit Counselors will be on-site and available by telephone. Please call or visit the website today to schedule your appointment:

- Call toll free 866-998-2915
- Visit: [Employee Benefits » Prime Healthcare Central Maine Acquisition - 2026](#)

Benefit Counselors from Worksite Communications will be available on-site and by telephone beginning February 18, 2026, from 7:00 a.m. – 7:00 p.m. EST thru March 6, 2026. Various appointment times are available to accommodate your schedule. The Benefit Counselor will assist you through the entire enrollment process. Please allow enough time for your appointment.

To prepare for your appointment, be sure to have the following information available:

- Social Security numbers, including dependent Social Security numbers
 - Names must be entered as shown on the Social Security Card
- Dependent verification documentation (original preferred, copies are also accepted)
- Life and AD&D Beneficiary Information
- Emergency Contact Information

Note: If your dependent spouse is eligible for medical coverage under their employer's medical plan, they will NOT be eligible to participate in the Prime Healthcare medical plan. He/she would need to enroll in their employer's medical plan. In addition, if your dependent spouse also works for one of the Central Maine Healthcare facilities transitioning to Prime Healthcare, or another Prime Healthcare facility, he/she will not be eligible to enroll in a Prime Healthcare medical plan as your dependent. However, a dependent spouse may enroll in our dental, vision and life plans as a dependent.

2. How do I enroll my family member(s)?

Proof of dependent eligibility is required. See the attached Dependent Verification Chart with the documents that will be accepted for verifying dependent eligibility. Once you have your appointment with a Benefit Counselor, you will need to provide the required (original) documents to show proof of dependent eligibility. Unverified dependents run the risk of being removed from coverage and premiums for ineligible dependents may need to be returned to Prime Healthcare.



3. What if I already have coverage elsewhere?

Full and Part-Time employees, who have other medical coverage through another group health plan and voluntarily choose not to enroll in Prime Healthcare's medical plan, may elect to opt out of the Prime medical plan. Proof of other coverage and completion of the Medical Waiver Acknowledgement Form is required. Please complete the forms in the online enrollment system (which is the preferred method) or submit your completed forms to Facility Benefits team.

4. How do I choose my Primary Care Physician?

For a list of participating Primary Care Physicians (PCPs) please visit <https://ehp.primehealthcare.com/find-a-provider>. If you have a child that is currently seeing a BCBS BlueCard PPO pediatrician, they may continue seeing that provider for PCP office visits. We realize that you may have a long-standing relationship with your current PCP. Prime Healthcare's network of providers is continuing to grow, and your provider is welcome to apply to become a member of our Tier 1 Prime Healthcare Network. Information on how to apply is detailed in Question 6.

5. What if my current PCP isn't in the Prime Healthcare Network?

Recognizing that many of our employees have long-standing relationships with providers, these providers are welcome to join the Prime Healthcare Network. To refer a provider, please submit the provider nomination form available on the EHP website <https://ehp.primehealthcare.com/forms/> and a Prime Representative will reach out to your provider. Members are welcome to share the provider contracting email EHPProvidercontracts@primehealthcare.com address with their Physicians. The Tier 1 Prime Provider Directory is posted to view or download on SharePoint and the EHP website [ehp.primehealthcare.com/provider-directory-files-tier-1/..](https://ehp.primehealthcare.com/provider-directory-files-tier-1/)

6. What if I have a serious condition or have surgery scheduled?

In certain situations, through Continuation of Care (COC), you may be able to continue with your current provider during the course of your treatment. Situations that would typically qualify for Continuation of Care services are:

- High-risk pregnancy and third trimester pregnancy, including the immediate postpartum period
- A surgery or other treatment that was previously approved to take place and is within 90 days from approved date
- A terminal illness
- Ongoing behavioral health services

If you or a dependent believe that you need to continue care with your provider, please log in and view the Continuity of Care letter and download and print the COC form and follow the



instructions for completion at <https://centralmaine.prime-healthplan.com/2026-open-enrollment-forms/>.

7. How do I submit my Enrollment document(s)?

Please complete your enrollment session with a counselor in person or online. This is the preferred method. If self-enrolling, please complete the forms in the online enrollment system. These forms can also be found at <https://centralmaine.prime-healthplan.com/2026-open-enrollment-forms/> prior to open enrollment.

- Dependent Verification documents if enrolling a dependent
- Coordination of Benefits Form (for dual coverage)
- Medical Waiver Acknowledgement and proof of another medical plan
If you decline medical coverage, you must sign and date a Medical Waiver Acknowledgement Form in the system.